

**DANCOVER<sup>®</sup>**



Manual  
for  
Patio Heater SENSUI

# USER'S MANUAL

## ELECTRIC PATIO HEATER



For outdoor use only.

The manual is part of heater, it contains important information, please keep for future reference.

Thank you for your purchase of this patio heater. The heater is carefully designed and manufactured for your best heating experience.

## **WARNING**

- This appliance can be used by children aged from 8 years and above and persons with reduced physical, sensory or mental capabilities or lack of experience and knowledge if they have been given supervision or instruction concerning use of the appliance in a safe way and understand the hazards involved. Children shall not play with the appliance. Cleaning and user maintenance shall not be made by children without supervision.
- Children of less than 3 years should be kept away unless continuously supervised.
- Children aged from 3 years and less than 8 years shall only switch on/off the appliance provided that it has been placed or installed in its intended normal operating position and they have been given supervision or instruction concerning use of the appliance in a safe way and understand the hazards involved. Children aged from 3 years and less than 8 years shall not plug in, regulate and clean the appliance or perform user maintenance.
- CAUTION — Some parts of this product can become very hot and cause burns. Particular attention has to be given where children and vulnerable people are present.
- If the supply cord is damaged, it must be replaced by the manufacturer, its service agent or similarly qualified persons in order to avoid a hazard.
- In order to avoid overheating, please do not cover the heater.
- The heater must not be located immediately below a socket outlet.
- The heater must be installed at least 1,8 m above the floor.
- Do not use the heater with a programmer, separate remote control system or any other device that switches the heater automatically, since a fire risk exists if the heater is covered or positioned incorrectly.
- Warning: the possible danger of installation close to curtains and other combustible materials, such as curtains, marquees, flags plastic foils etc.
- Do not use the heater in reach of a shower, bath or a swimming pool.
- Do not use in unventilated areas.
- Do not use where gas, petrol, paint or other flammable materials are stored.
- Do not push any items through, obstruct or cover the grills of the heater head.
- Do not move the heater when it is connected to electrical supply.
- Always wait till the heater has cooled down completely before storage.
- Do not touch the heater head during in use.
- Do not leave heater turned on and unattended especially when children and or animals are in the vicinity.
- The heater must be placed with a clearance of 100cm to the wall and 30cm to the ceiling.
- The heater is extremely hot during operation. It keeps hot for a period after shutdown. Potential danger would occur when touching it during this period.
- Do not wrap power supply cord on the unit.
- The heater must be handled with care, no violent vibration or hitting.
- The heater must be securely grounded during operation.
- In case of damage, it must be repaired by professional electricians.

- Keep the heater and its cord out of reach of children less than 8 years.
- This heater is not equipped with a device to control room temperature. Do not use this heater in small rooms when they are occupied by persons not capable of leaving the room on their own, unless constant supervision is provided.
- CAUTION: some parts of this heater can become very hot and cause burns. Particular attention has to be given where children and vulnerable people are present.
- Do not use the heater as a cloth drier or tower drier.
- Do not use the heater as a sauna heater.
- Do not use the heater as a room heater.
- Do not use the heater in place of animal propagating and raising.
- Do not immerse the heater into water for cleaning.

### ASSEMBLY

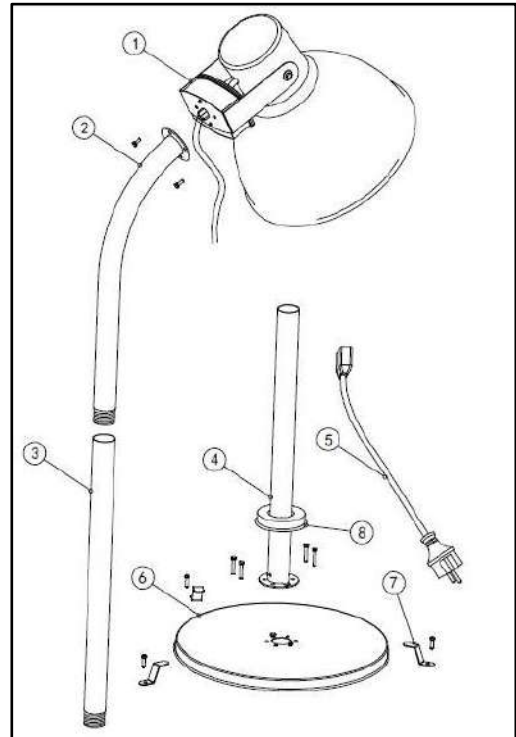
When unpacking the heater, please make sure that all the items are present and there are no components left in the box and that all the parts are free from any packing material.

Do not connect the heater to electric supply until all the assembly is done.

Do not connect the heater to electrical supply if any of the components or power cord is damaged in any way. In case of doubt, please contact your local supplier.

### PART LIST

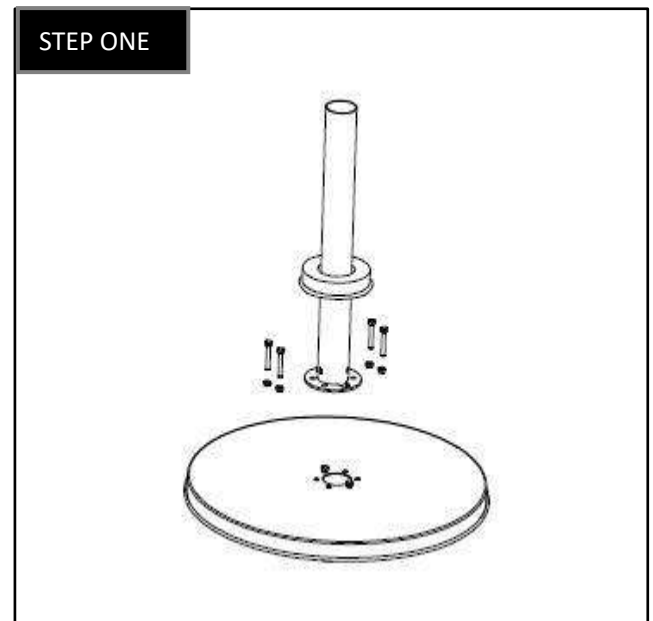
PART NO.	DESCRIPTION	QTY
1	HEATER HEAD	1
2	TOP POLE	1
3	MIDDLE POLE	1
4	BOTTOM POLE	1
5	POWER CORD	1
6	BASE	1
7	ANCHOR	3
8	DECO RING	1



## ASSEMBLY STEPS

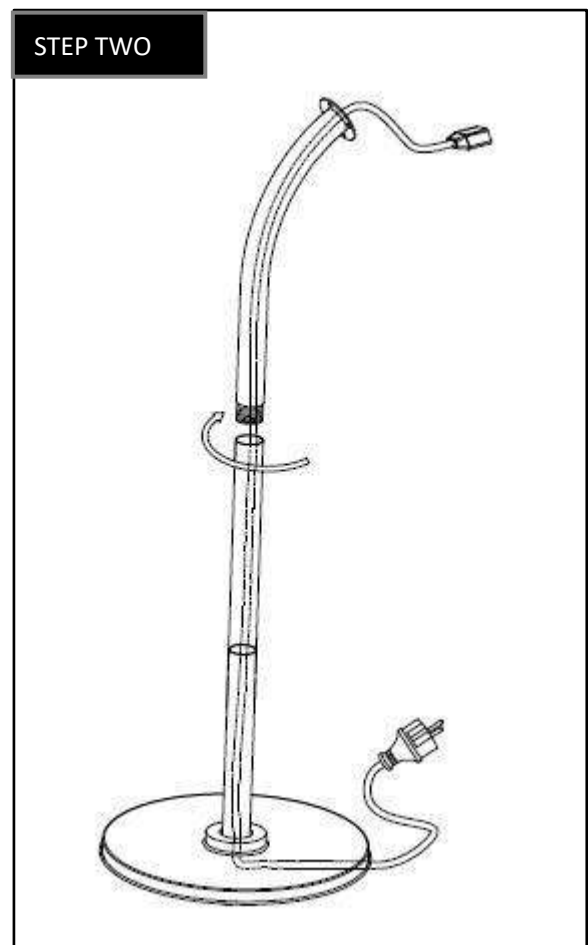
### STEP ONE

- A. Insert 4pcs M6 nut onto the backside of base, align bottom pole with the base, then insert 4pcs M6x30 screw and fully tighten them.
- B. Place Deco ring on to the tube.



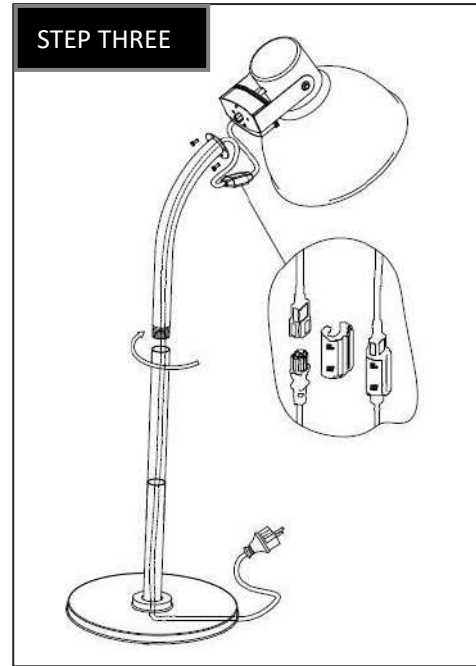
### STEP TWO

Screw middle pole with bottom pole, then top pole with middle pole securely. While connecting the poles together, please insert power cord into the center hole of the base on the backside and pull it from the poles gently on the top.



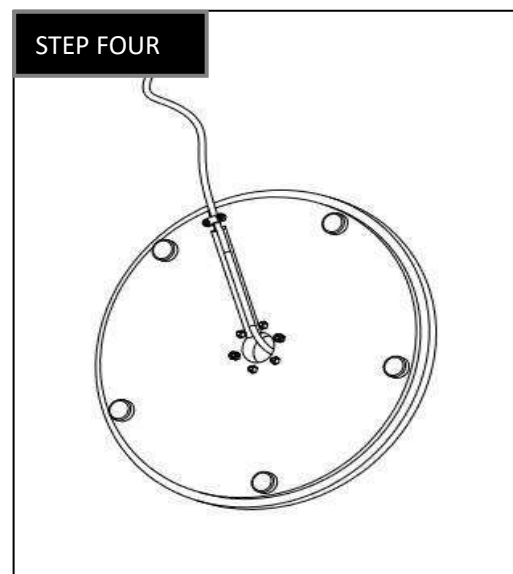
### STEP THREE

Connect power cord with socket on heater head, secure them with plastic lock. Align heater head with top pole and screw them together with 2pcs M10x12 screw.



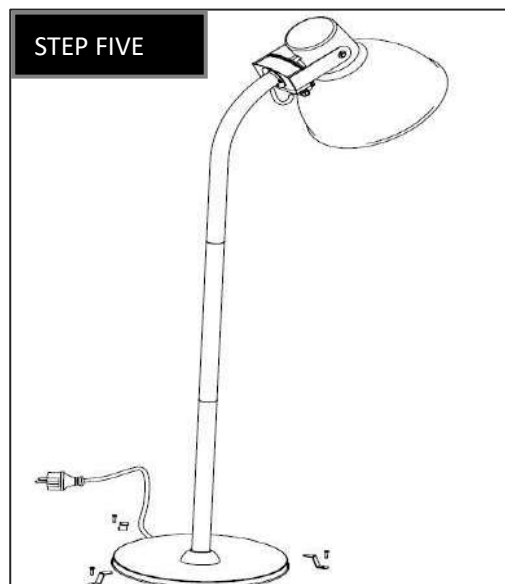
### STEP FOUR

While holding the heater, lock the cable inside the groove under the base with 2pcs M3 screw.



### STEP FIVE

Anchor your heater onto the ground with 3 anchors and 3 supplied bolts.



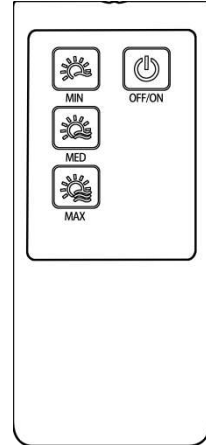
## OPERATION

Site your heater outside or in a large open area and well away from any obstructions such as branches, or where the heater is near any objects that can be affected by heat, such as furniture, curtain or other flammable objects. Minimum clearance is 1 meter.

Place the heater on a firm, level surface and plug it into a grounded 220-240V/50-60Hz power outlet. Only operate the heater when it is in upright position and the base is attached. This heater is equipped with a ON/OFF pull switch.

### TURNING THE PATIO HEATER ON AND OFF BY REMOTE CONTROLLER

- Insert the plug into a socket.
- Please turn on the rocker switch on heater.
- Please press ON/OFF on the remote controller to use the heater. To adjust power, please press MAX, MED or MIN for desired heat.
- To turn off the heater, press ON/OFF button again on the remote controller. For a long period of inactivity, please turn off the switch on heater, and pull the plug off.



### TURNING THE PATIO HEATER ON AND OFF BY TOUCH SWITCH

- Insert the plug into a socket.
  - Please turn on the rocker switch on heater.
  - Please press POWER SETTING to adjust power for desired heat.
  - For a long period of inactivity, please turn off the switch on heater, and pull the plug off.
- 
- **After using the heater, it always must be turned off with the button or the remote control and the power plug must be pulled out of the socket.**
  - **Allow the heater to cool completely before moving and storage.**
  - **Never use the heater when there are bad weather conditions like rain, snow, hail, or a thunderstorm.**
  - **Pay attention that, no combustible material due to wind or other environmental influences covers or obstructs the appliance, such as curtains, marquees, flags, plastic foil etc.**



### ADJUSTMENT OF HEATER HEAD

Heater head can be adjusted up or down only after handle knob is turned loose.

**WARNING:** Please do not adjust heater head after its tightly locked, to do so will damage your heater.

## **CARE AND MAINTENANCE**

- Unplug the heater and let it cool down completely.
- Keep the heater clean. The outer shell may be cleaned with soft, damp cloth. You may use a mild detergent if necessary. After cleaning, dry the heater with a soft cloth.
- Do not use alcohol, gasoline, abrasive powders, furniture polish, or rough brushes to clean the heater. This may cause damage or deterioration to the surface of the heater.
- Do not immerse the heater in water or allow it to get wet.
- Wait till the heater is completely dry before use.
- Any type of maintenance or repairs including the replacement of heating tube should only be carried out by a qualified electrician or by a recommended service center.
- For a long time of inactivity, please protect the heater with a fabric cover from rain and dust.

## **SPECIFICATION**

*Wattage: 2000W, 220-240V/50-60Hz*

*IP rating: IPX4*

*Unit size: 230CM(H)x47CM(D)*

*Unit weight:13.00KGS*

*Lamp type: Halogen*

*Power cord visible length 1.8M*

*Radiation area: 10 m<sup>2</sup>*

## **DISPOSAL**

Waste electrical production should not be disposed of with household waste. Please recycle where facilities exist. Check with your local authority or retailer for recycling advice.



## Contact information

Head office:

Dancover A/S  
Lyngevej 16A, Nørre Herlev  
3400 Hillerød  
Denmark

For more information  
please visit:

[www.dancovershop.com](http://www.dancovershop.com)

## National contact

Denmark:

[denmark@dancover.com](mailto:denmark@dancover.com)

UK:

[uk@dancover.com](mailto:uk@dancover.com)

Germany:

[germany@dancover.com](mailto:germany@dancover.com)

France:

[france@dancover.com](mailto:france@dancover.com)

Sweden:

[sverige@dancover.com](mailto:sverige@dancover.com)

Finland:

[suomi@dancover.com](mailto:suomi@dancover.com)

Poland:

[polska@dancover.com](mailto:polska@dancover.com)

Luxembourg:

[luxembourg@dancover.com](mailto:luxembourg@dancover.com)

Portugal:

[portugal@dancover.com](mailto:portugal@dancover.com)

Spain:

[espana@dancover.com](mailto:espana@dancover.com)

Italy:

[italia@dancover.com](mailto:italia@dancover.com)

Switzerland:

[schweiz@dancover.com](mailto:schweiz@dancover.com)

Austria:

[austria@dancover.com](mailto:austria@dancover.com)

Norway:

[norge@dancover.com](mailto:norge@dancover.com)

Nederland:

[nederland@dancover.com](mailto:nederland@dancover.com)

Ireland:

[ireland@dancover.com](mailto:ireland@dancover.com)

Belgium:

[belgique@dancover.com](mailto:belgique@dancover.com)